



DMC

Cross Stitch in:

+	Topaz	Gold 7
■	Black	310
▼	Steel Grey dk	414
◆	Garnet dk	814
▲	Green dk	986
●	Pewter Grey vy dk	3799
⊕	Pewter Grey vy dk + Black	3799 + 310

Back Stitch in:

—————	Topaz	Gold 7
—————	Black	310
—————	Steel Grey dk	414
—————	Garnet dk	814
—————	Green dk	986
—————	Pewter Grey vy dk	3799
—————	Pewter Grey vy dk + Black	3799 + 310

Additional Information

The DMC threads used in this design are as follows :-

- 310 – Black, 11 metres
- 414 – Steel Grey Dk, 1 metres
- 814 – Garnet dark, 3 metres
- 986—Green dark, 2 metres
- 3799—Pewter Grey Vy Dk, 10 metres

Also a 35- metre card of Gold 7 blending filament in the Madeira Glissengloss range.



Catkin Embroidery Designs Blackwork Instructions

General

In order to maintain an even tension it is advisable to use an embroidery frame or hoop. If you are leaving your work for some time, remember to release the fabric from the frame to prevent it being marked. In Blackwork it is essential to avoid carrying threads a long distance across the back of the fabric as it shows through the completed work.

Getting Started

Bind, tape or zig-zag raw edges of material to prevent fraying. Fold the material into four, horizontally and vertically and pinch centre to mark design-starting point. Sort and identify threads, daylight is best for this. The six stranded thread can be separated into 1 or 2 strands as required. It is inadvisable to use lengths of more than 20 inches.

Start working your design from the middle so that it is centred on your material. Do not start with a knot. Blackwork consists of an outline usually in 2 strands, with an infill pattern that is usually in 1 strand. This is only a general rule and specific instructions for this design can be found in the design notes. It is a matter of personal preference whether the outline or the infill pattern is stitched first. For those who prefer to stitch the outline first it will be necessary to find the centre of the fabric and count squares (Aida) or threads (Evenweave) outwards to reach a starting point.

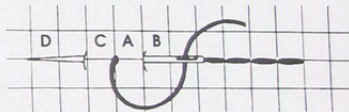
Please remember to weave loose threads into the back of the finished work to prevent them showing through the design when framed. Since Blackwork has so many areas of blank fabric incorporated into the design there is more danger of this happening than in any other embroidery techniques.

Stitches

Note that the stitches below are illustrated on 14 count Aida, where the squares can be easily seen on the fabric. In the case of 28 count Evenweave or Jobelan remember to stitch over 2 x 2 threads.

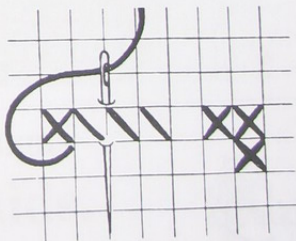
Back stitch

Represented by lines on the chart and can be stitched horizontally, vertically or diagonally. Bring needle up at A, down at B, up at C, down at A and up at D. Continue until outline is completed.



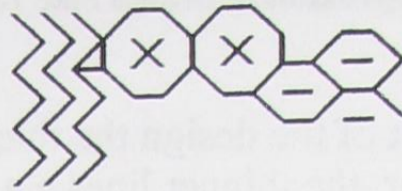
Cross stitch

The colour used is indicated by the symbol in the square which can be identified from the Chart Key. The direction these are worked in is not important PROVIDED all the top stitches are worked in the same direction i.e. left to right or right to left.



The Tree

The **leaves** are stitched in 1 strand of DMC 3799

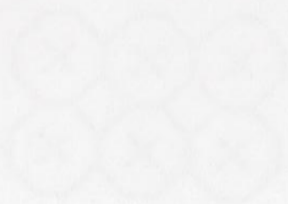


The **twigs** at the end of the branches are stitched in 2 strands of DMC 3799



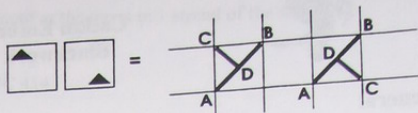
Copyright Notice

All printed matter in this pack is the copyright of Catkin Embroidery Designs 2006 and may not be copied by any means or stored in any retrieval system without the express written permission of the publisher.



1/2 Cross-stitches

If the symbol is in the corner of the square with a diagonal line across the square, it indicates a half stitch. Bring the needle up at corner **A** and then diagonally down at the opposite corner **B**. Next bring the needle up at **C** and down at **D** in the centre of the square.



Beads

Where a design uses beads, these are attached by a diagonal stitch through the bead in a single strand of toning cotton, using a beading needle or crewel No. 8.

Special Aftercare Instructions

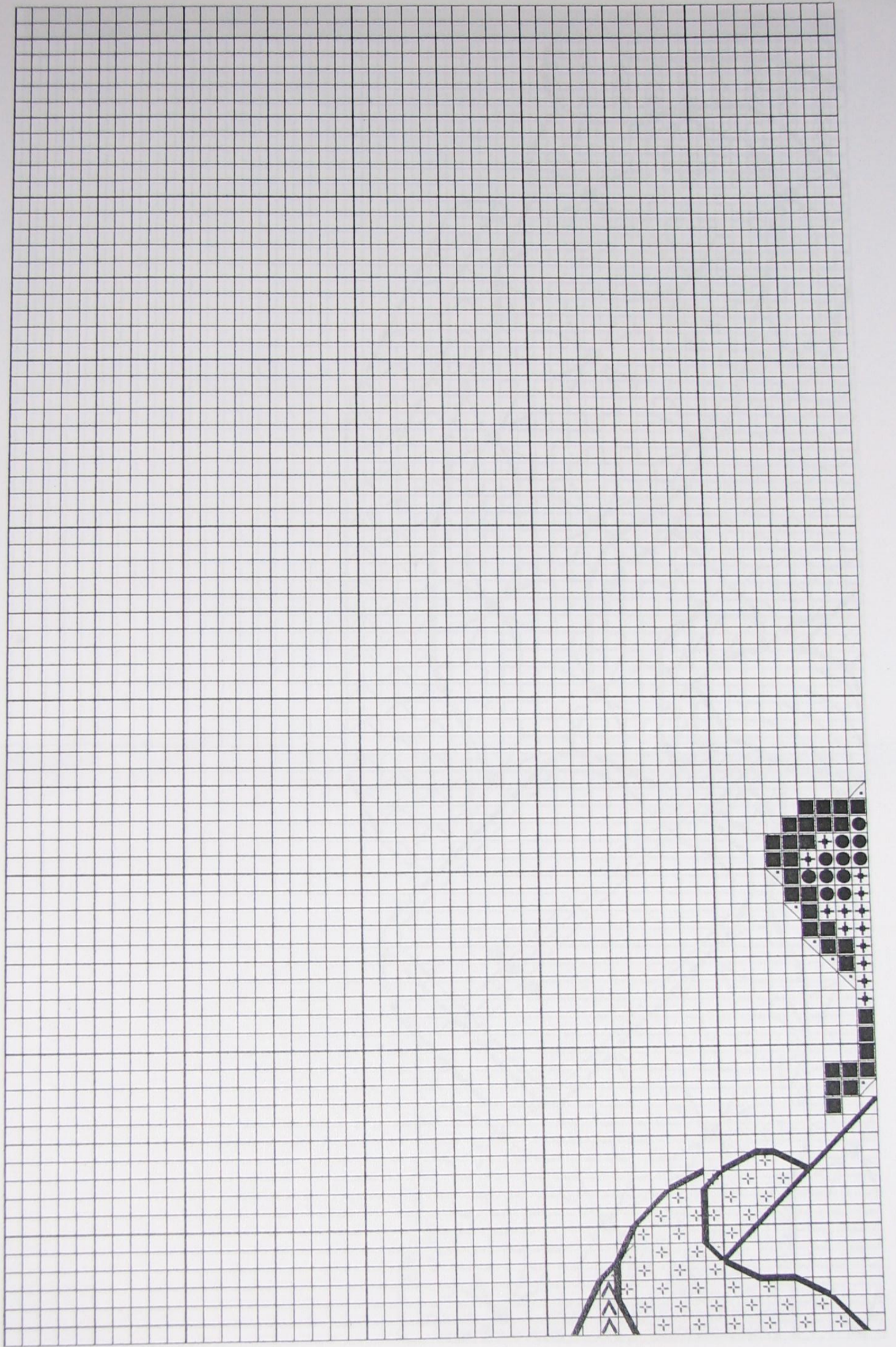
Natural oils from the skin may discolour the fabric after a time under glass. It is recommended that the work be gently hand washed in luke-warm water, using a mild detergent (non- biological and bleach free) rinsed well before excess water is squeezed out onto a towel
Whilst damp, iron face down on a thick towel. This prevents the stitching being flattened. Metallic threads and beads should have work covered with a cloth before being ironed face down.

We hope you enjoy working this design. A catalogue of other designs is available from the address below.



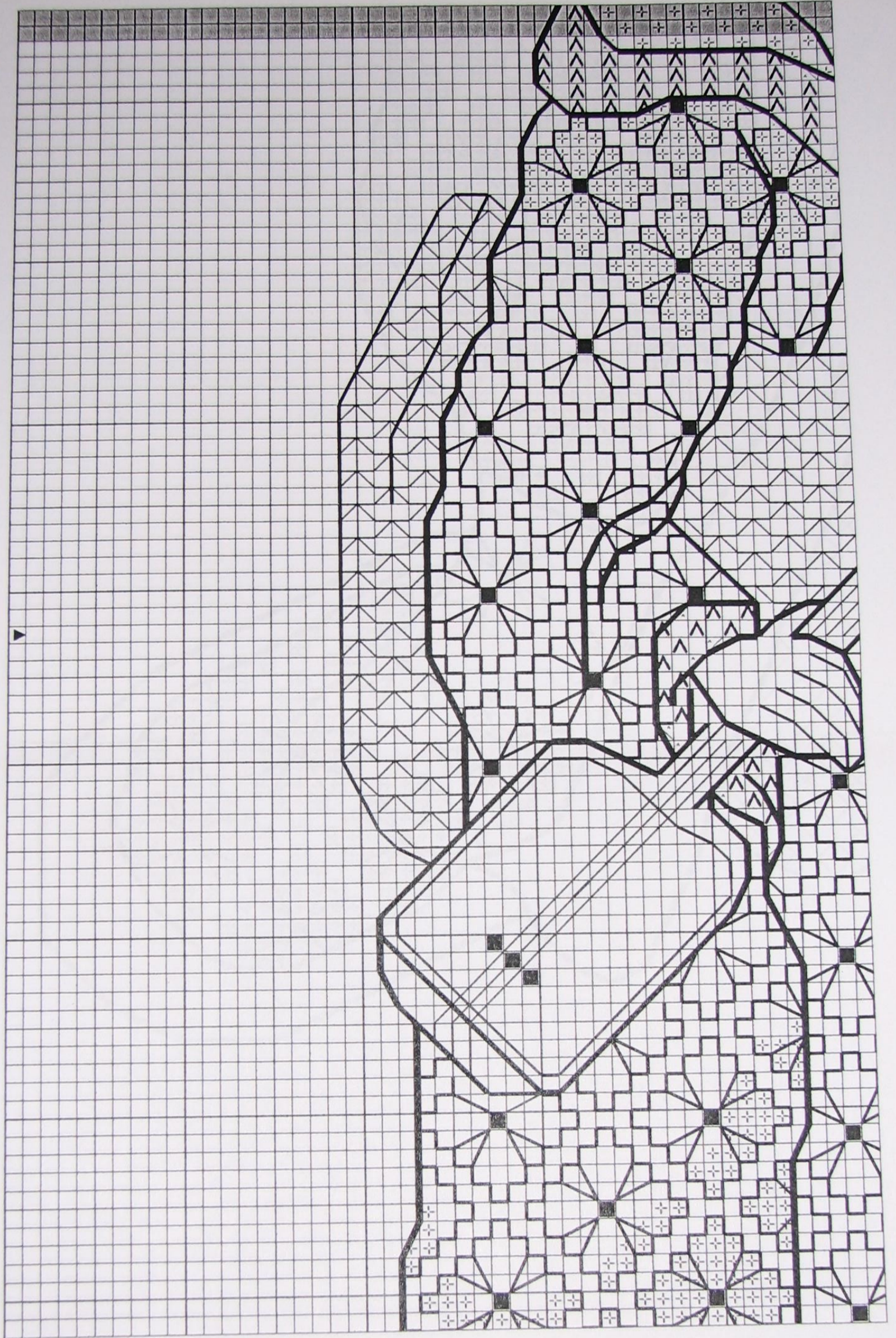
Catkin Designs

31 Cleeve Road,
Knowle,
BRISTOL BS4 2JR.



Catkin Embroidery Designs
The Musicians

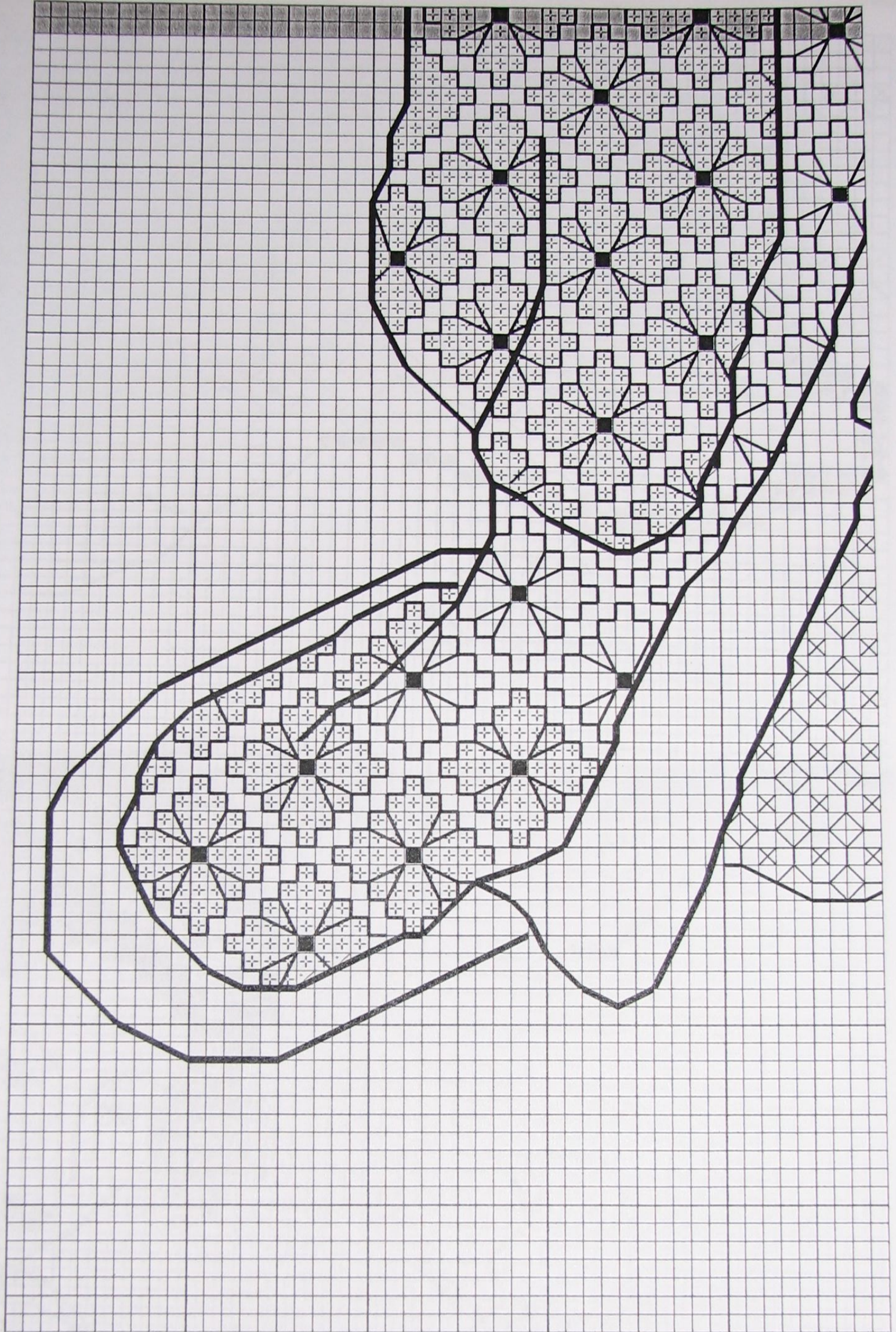




Catkin Embroidery Designs

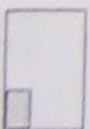
The Musicians

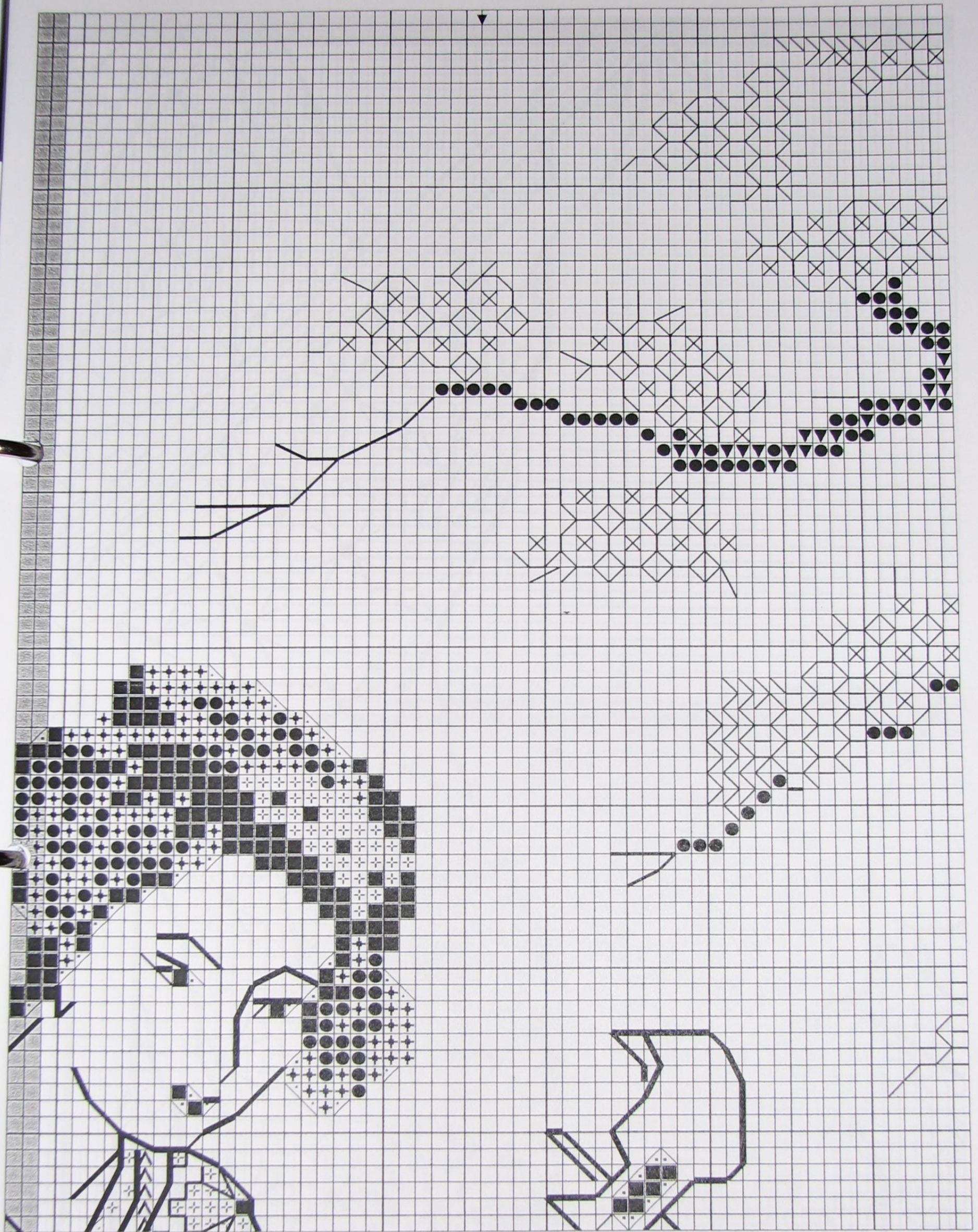




Catkin Embroidery Designs

The Musicians

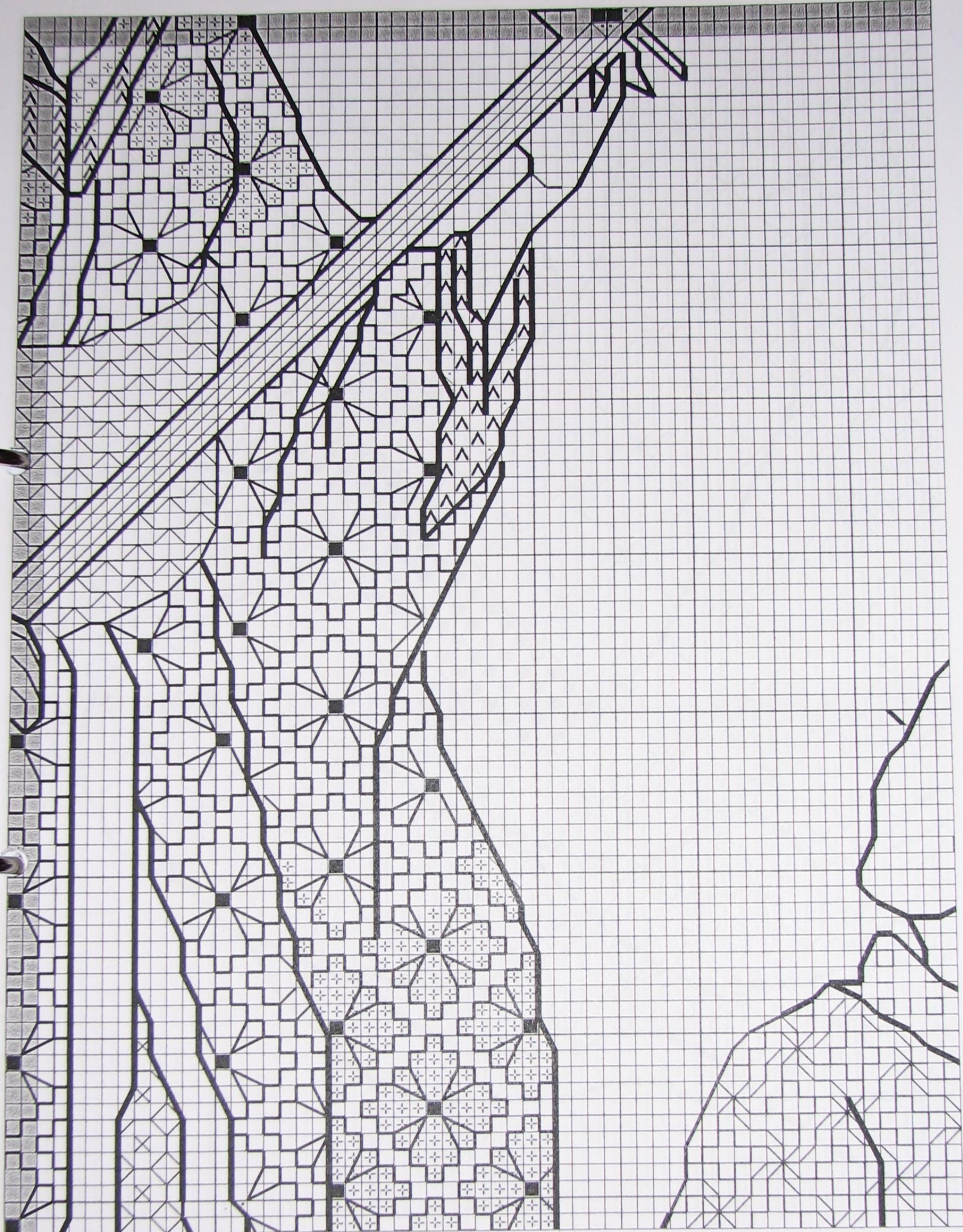




Catkin Embroidery Designs

The Musicians





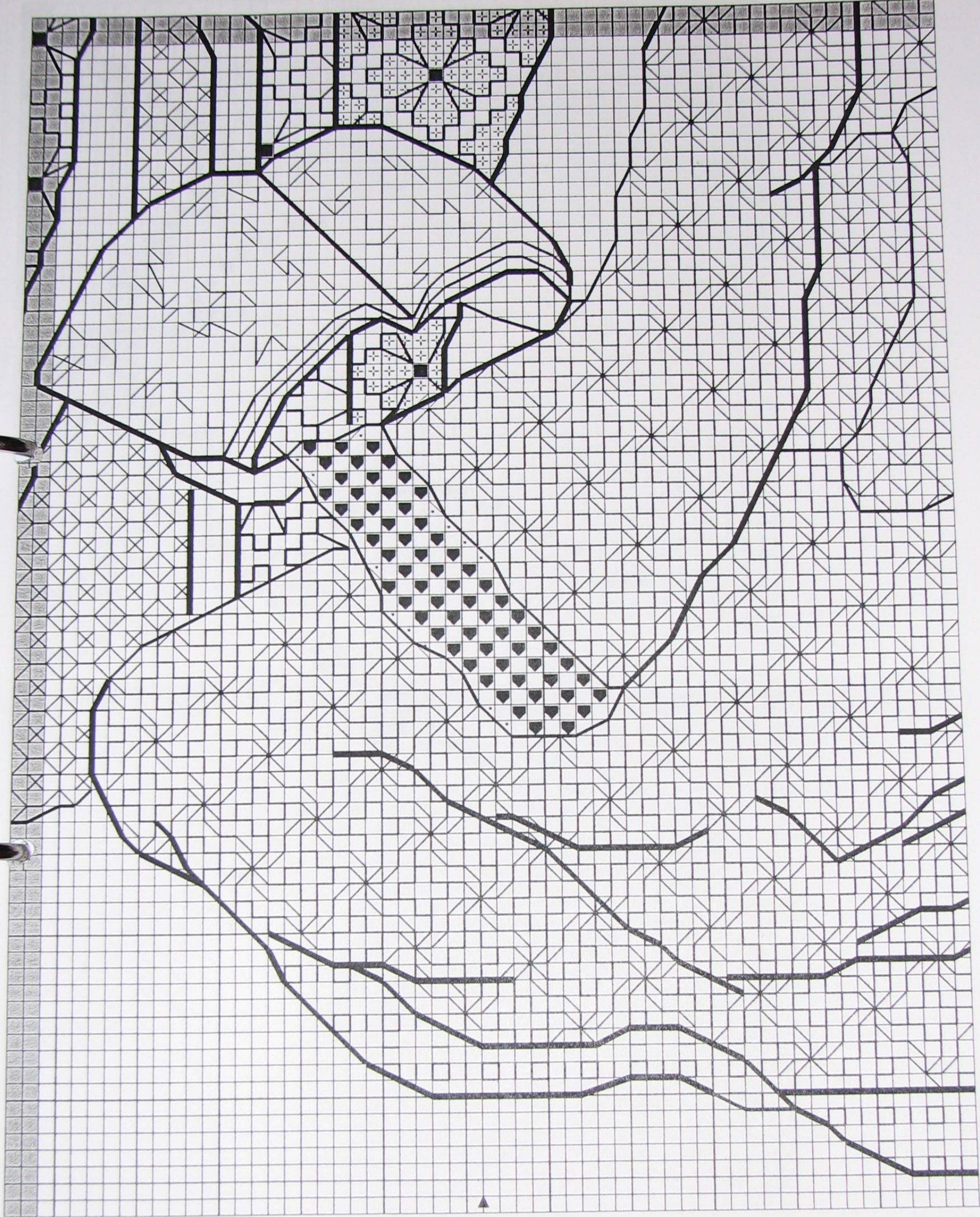
Catkin Embroidery Designs

The Musicians



Page 5 of 9 Please note there is a two line overlap at the top and the left hand side of this page

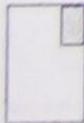
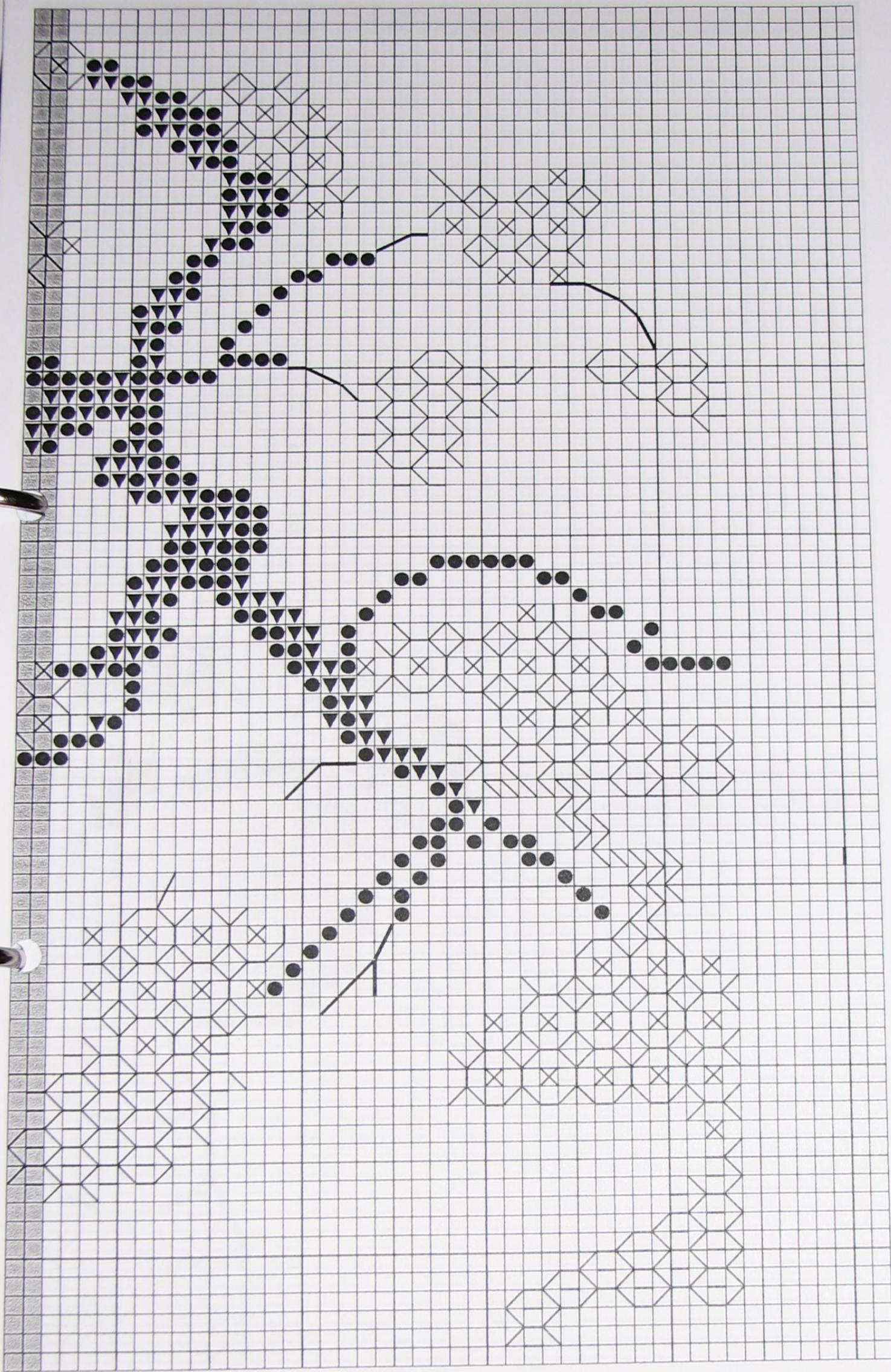




Catkin Embroidery Designs

The Musicians

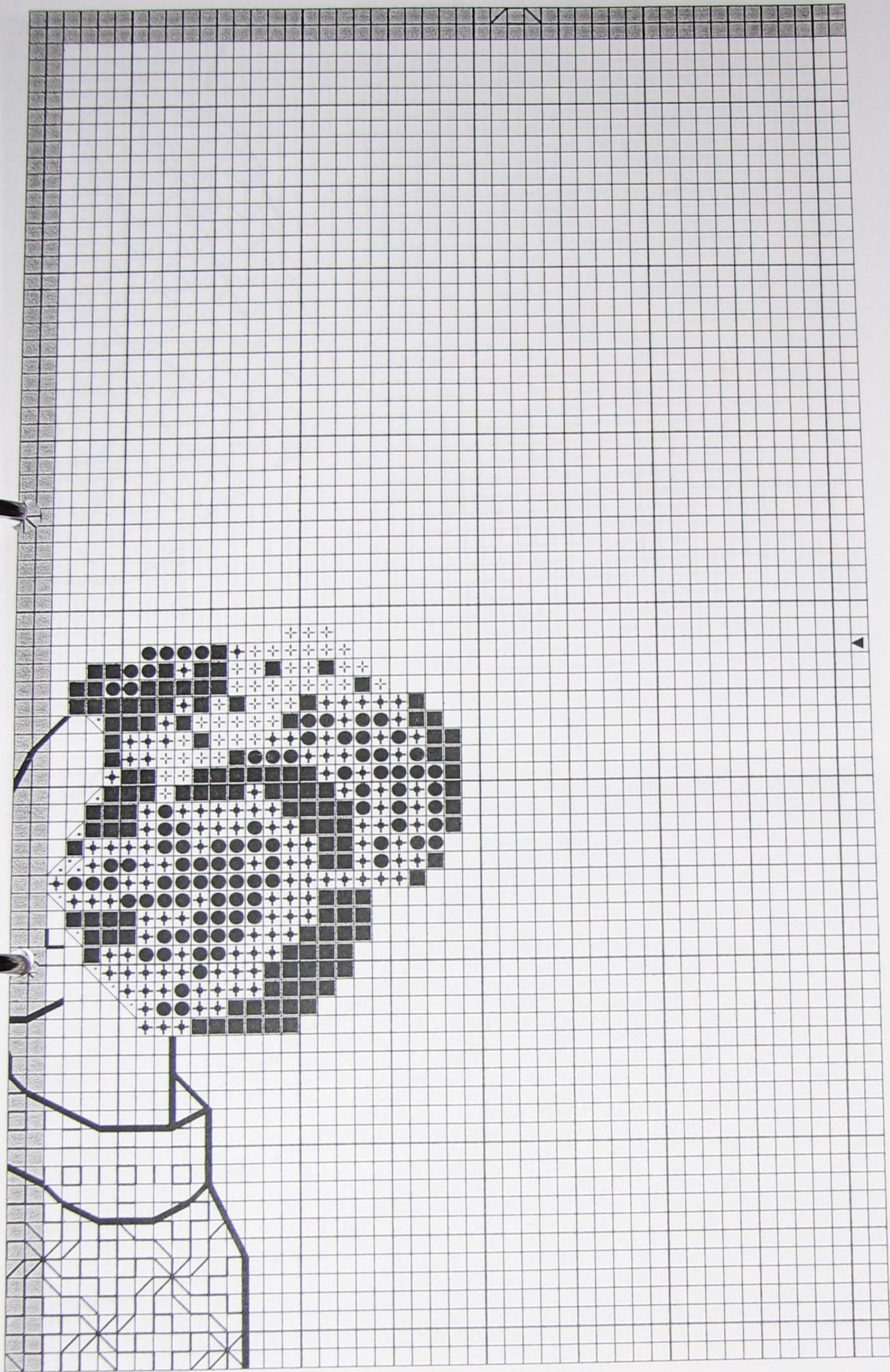




Catkin Embroidery Designs

The Musicians

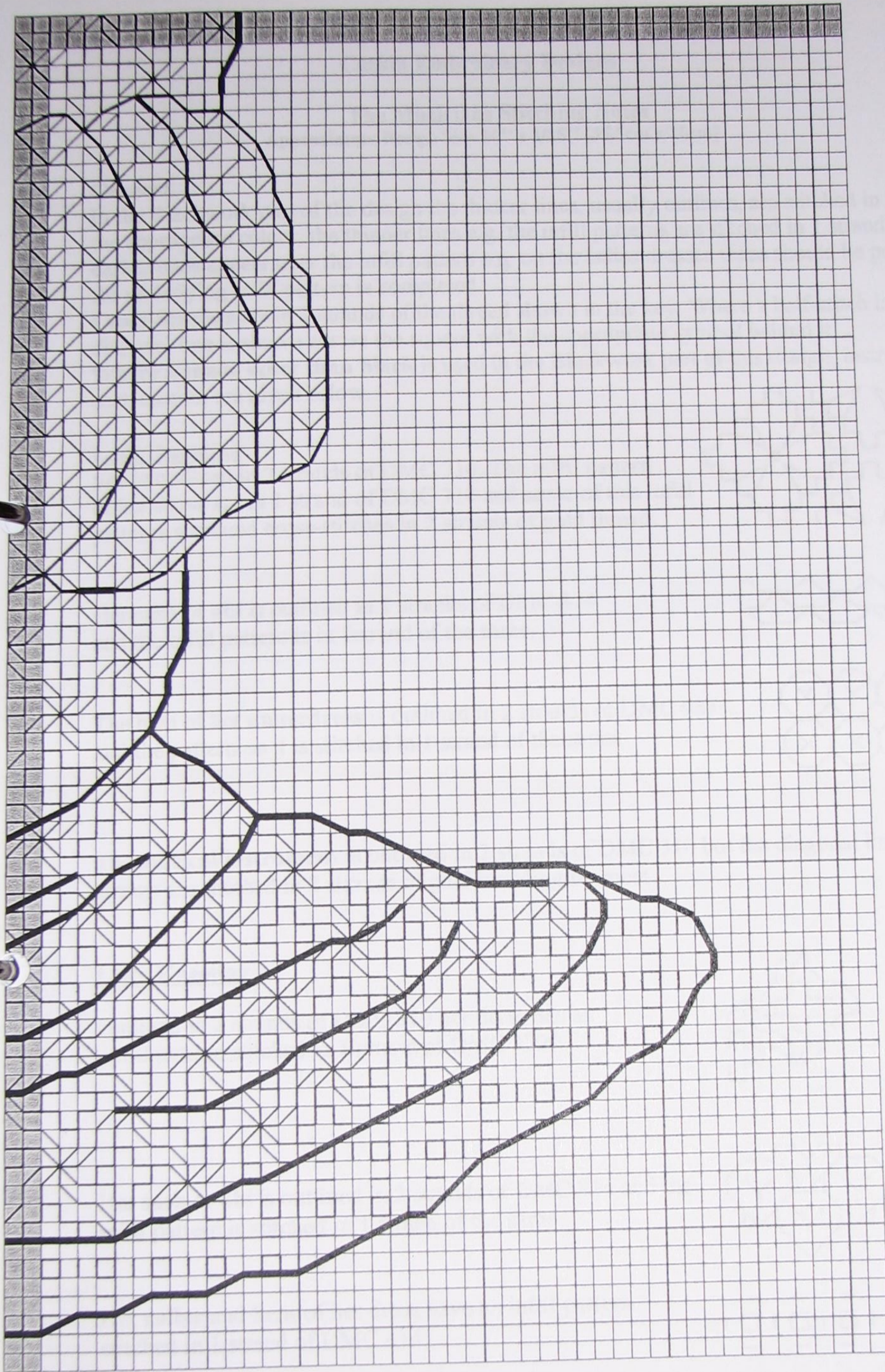




Catkin Embroidery Designs

The Musicians





to 2 strands of
red thread
put in after
to make a
f-hole for
the body of the
instrument



Catkin Embroidery Designs

The Musicians

